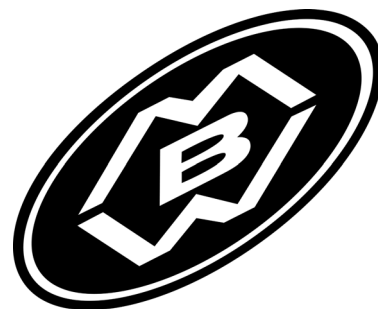


OPERATOR'S SAFETY AND SERVICE MANUAL



GP5800

This manual covers the following serial numbers
and higher for each model listed:

GP5800.....5800001



VIBRATORY PLATE

MBW, Inc.

250 Hartford Rd • PO Box 440
Slinger, WI 53086-0440
Phone: (262) 644-5234
Fax: (262) 644-5169
Email: mbw@mbw.com
Website: www.mbw.com

MBW (UK) Ltd.

Units 2&3 Cochrane Street
Bolton BL3 6BN
England, UK
Phone: 44 (0) 01204 387784
Fax: 44 (0) 01204 387797
E-mail: mbwuk@btinternet.com

MBW FRANCE S.A.R.L.

Phone: +33 (0) 3 44 07 15 96

L20016 / 05.19.G
©MBW, Inc. 2015
Printed in the USA

WARNING

Operating, servicing and maintaining this equipment can expose you to chemicals, including engine exhaust, phthalates and lead, which are known to the state of California to cause cancer and birth defects or other reproductive harm. Avoid breathing engine exhaust. Do not operate equipment in confined areas. For more information go to www.P65Warnings.ca.gov



21820

12500



21139

GP5800

21140

CAUTION

Read the Operating Instructions before operating this piece of equipment.

Keep unauthorized and untrained people away from this equipment.

ROTATING & MOVING PARTS! Make sure all guards and safety devices are in place.

Avoid breathing dust from operating machine, wear OSHA specified dust mask/respirator.

Failure to comply could result in serious bodily injury.

20019

CAUTION

HOT SURFACE
DO NOT TOUCH

SURFACE CHAUDE
NE PAS TOUCHER

09311



21742

CAUTION

Machine may fall and cause injury or damage if lifted improperly. Lift by handles or rollcage only.

GP2000=165 lbs (75 kg)	AP3550=254 lbs (115 kg)
AP2000=193 lbs (88 kg)	GP5800=300 lbs (136 kg)
GP3550=226 lbs (103kg)	

16402

16402

WARNING

OPERATION OF THIS EQUIPMENT MAY CREATE SPARKS THAT CAN START FIRES AROUND DRY VEGETATION. A SPARK ARRESTER MAY BE REQUIRED. THE OPERATOR SHOULD CONTACT LOCAL FIRE AGENCIES FOR LAWS OR REGULATIONS RELATING TO FIRE PREVENTION

19791

WARNING

ROTATING PARTS can crush and cut. Keep hands away!

12573

12573

PLATES OPERATING INSTRUCTIONS

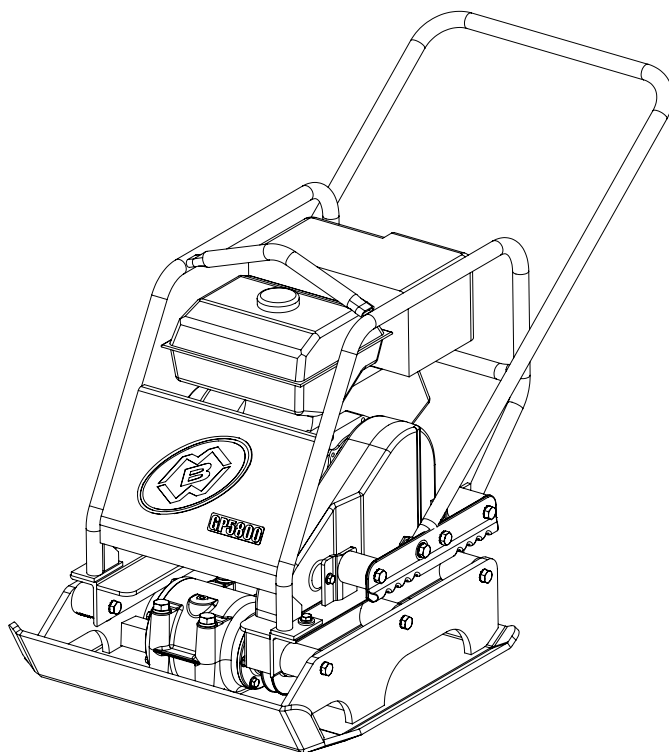
1. Check engine oil.
2. Open fuel valve.
3. Choke engine. A warm engine may not need to be choked.
4. Open throttle part way.
5. Pull starter rope.
6. After starting: open choke, return throttle to idle position.
7. During operation, when excessive kickback is noticed, maximum compaction has been reached.
8. To stop: Return throttle to idle position, use engine stop switch, close fuel valve.

13482

13482

Safety Decals (Decal Set #12100)

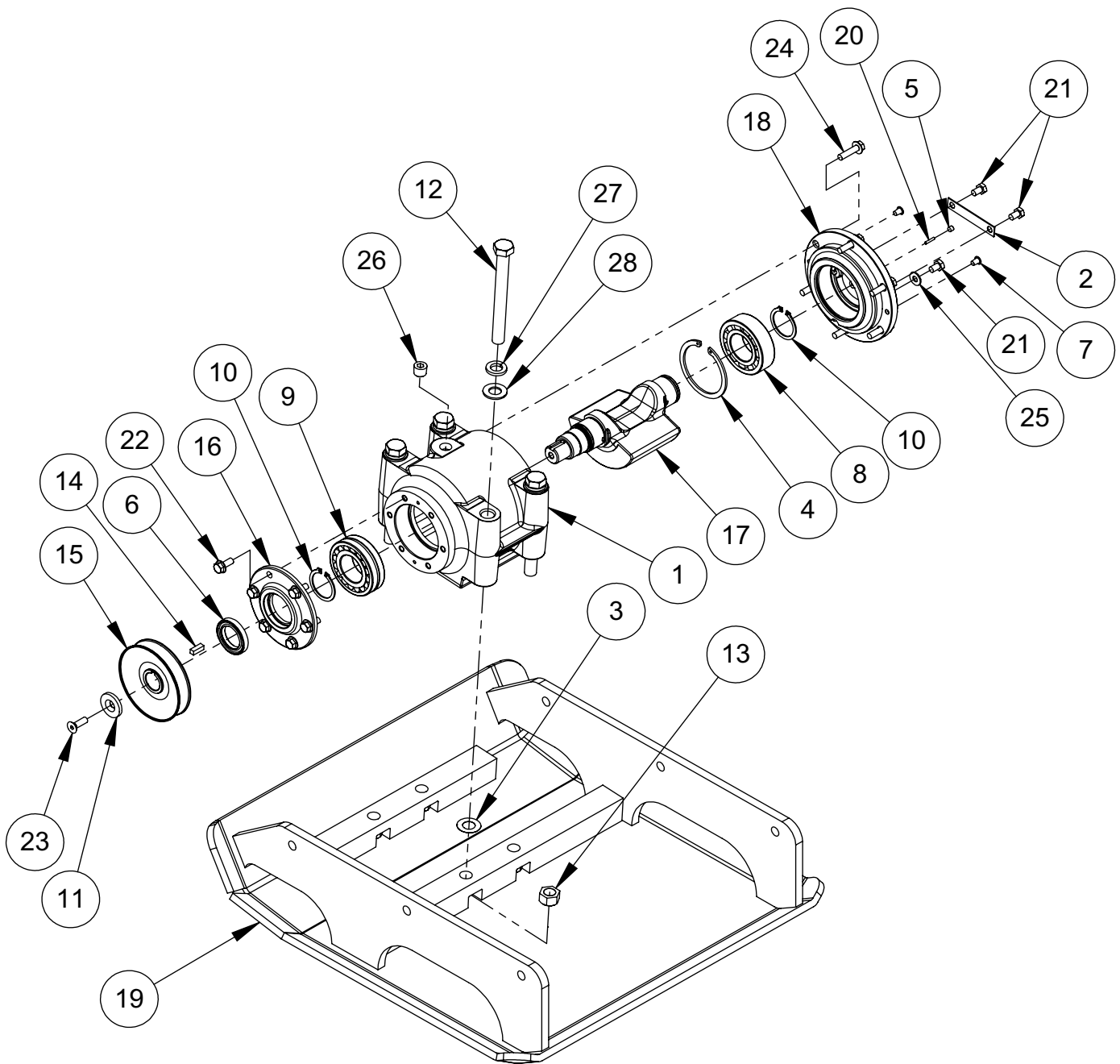
SPECIFICATIONS



	GP5800H
Centrifugal Force	5800 lbf (25.8 kN)
Exciter Speed	4800 vpm
Travel Speed	130 ft./min. (39.6 m/min.)
Compaction Depth	20 in (51 cm)
Plate Size (W x L)	23 x 24 in (58 x 61 cm)
Operating Weight	289 lb. (131 kg)
Engine Speed	3400 rpm
Operating Noise Level¹	96 dBA
Compaction Area	14950 sqft/h (1389 sqm/h)
Engine Model	Honda GX270

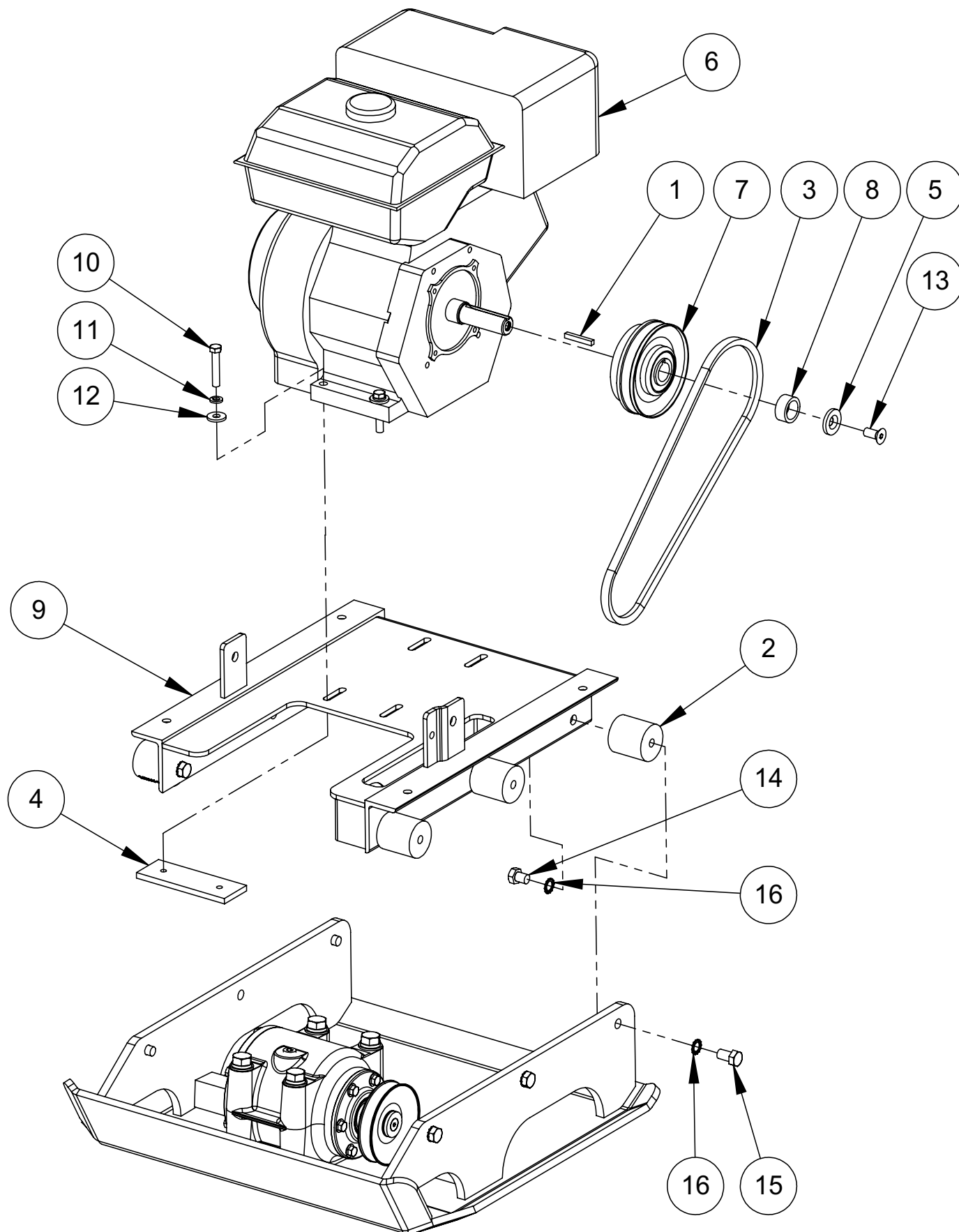
Specifications subject to change without notice.

- No universal method or formula has been accepted for determining “Compaction Force”. All manufactures employ their own method or formula.

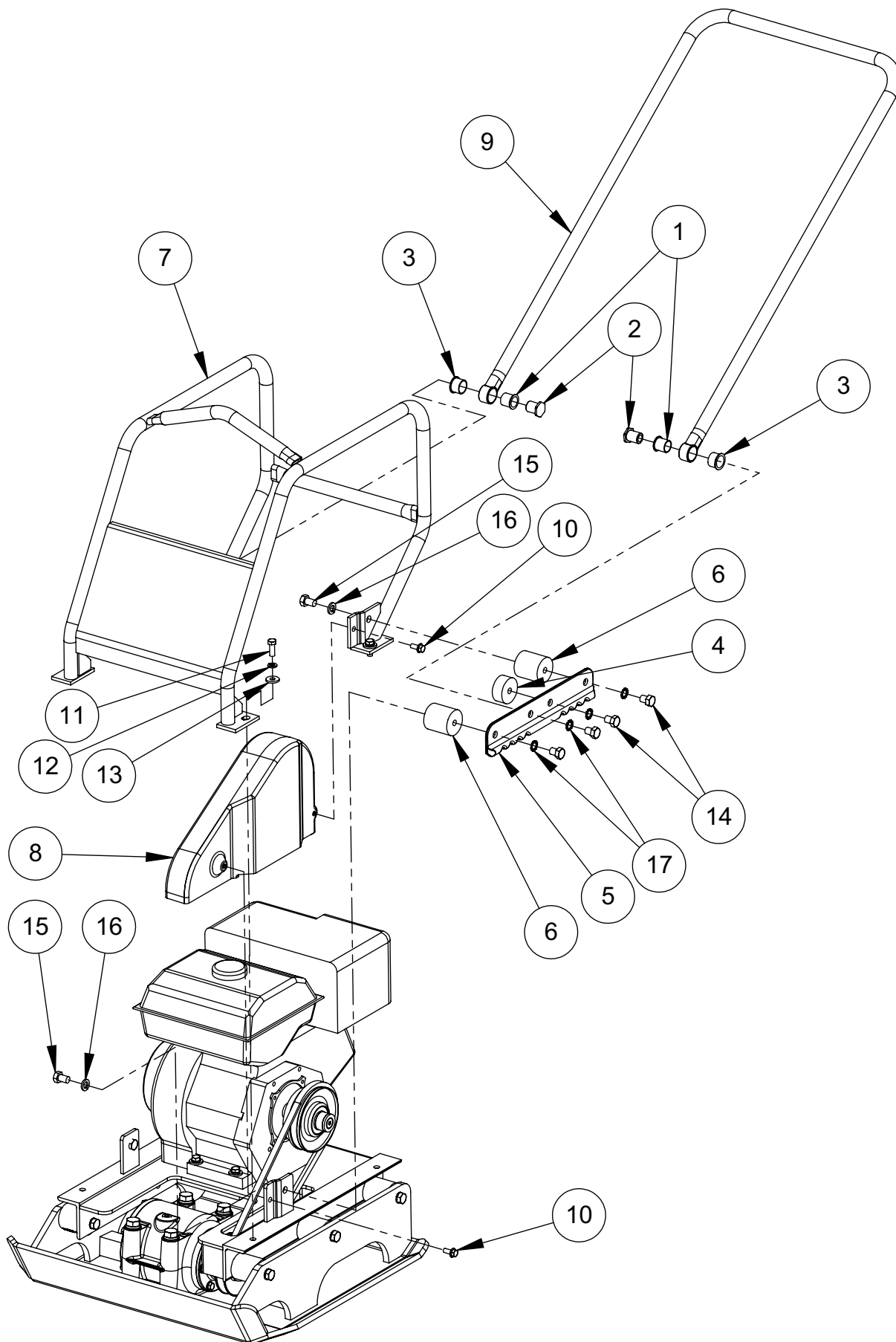


Exciter Assembly

ITEM	PART NO.	DESCRIPTION	QTY
1.	00001	EXCITER HOUSING	1
2.	00066	FILTER RETAINER	1
3.	00259	SHIM, EXCITER (AS REQUIRED)	
4.	01000	RETAINING RING, INTERNAL	1
5.	01072	FILTER, FELT	1
6.	01107	SHAFT SEAL	1
7.	05559	PLUG, PLASTIC	2
8.	07456	ROLLER BEARING	1
9.	07458	SPERICAL ROLLER BEARING	1
10.	07469	RETAINING RING, EXTERNAL	2
11.	14993	WASHER, COUNTERSUNK	1
12.	18700	HEX HEAD CAP SCREW, 5/8-11 x 6" LG. GRADE 8	4
13.	18701	HEX NUT, 5/8-11	4
14.	19135	SHAFT KEY, 1/4" SQUARE x 3/4" LONG	1
15.	19629	EXCITER PULLEY	1
16.	19991	COVER, FRONT	1
17.	19992	EXCITER SHAFT, 5800	1
18.	19993	COVER, BACK	1
19.	19986	BASE PLATE, GP5800	1
20.	F0205SP	SPIROL PIN, 1/8: DIA. x 5/8" LONG	1
21.	F051804HCS	HEX HEAD CAP SCREW, 5/16-18 x 1/2 LG.	3
22.	F051806FWS	FLANGE LOCK SCREW, 5/16-18 x3/4 LG.	6
23.	F051808FSS	FLAT HEAD SCOCKET SCREW, 5/16-18 x 1" LG.	1
24.	F051808FWS	FLANGE LOCK SCREW, 5/16-18 x1 LG.	6
25.	F05BFW	BRASS FLAT WASHER	1
26.	F0618SPP	SOCKET PIPE PLUG, 3/8-18 NPT	1
27.	F10LW	LOCK WASHER, 5/8	4
28.	F10PW	PLAIN WASHER, 5/8	4
		REPLACEMENT KITS:	
	19990	EXCITER ASSEMBLY COMPLETE	
	18719	KIT, PAVER PAD	



Engine Assembly



Roll Cage Assembly

